

# MONTHLY MEMBERSHIP PROGRESS REPORT

District 33 S

Results as of: 6/30/2024

GMT:

LOCATION MASSACHUSETTS

GMT CA

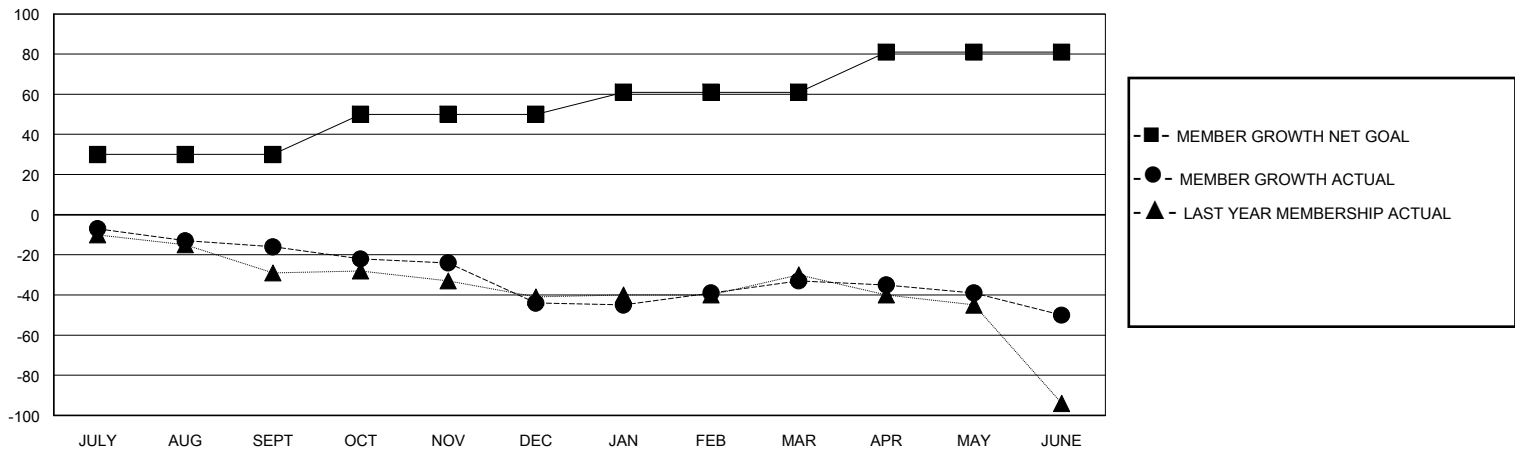
Clubs			
RESULTS FOR 2023-2024			
QUARTER	NEW CLUB GOAL	NEW CLUBS	DROPPED CLUBS
JULY/AUG/SEPT	0	0	1
OCT/NOV/DEC	0	0	0
JAN/FEB/MAR	1	0	0
APR/MAY/JUNE	0	0	0

Members			
RESULTS FOR 2023-2024			
QUARTER	MEMBER GROWTH NET GOAL	MEMBER GROWTH ACTUAL	DROPPED MEMBERS ACTUAL (including transfers)
JULY/AUG/SEPT	30	22	37
OCT/NOV/DEC	20	30	52
JAN/FEB/MAR	11	40	26
APR/MAY/JUNE	20	24	32

GOALS AND ACTUAL NEW CLUBS CUMULATIVE



GOALS AND ACTUAL MEMBERS CUMULATIVE



DROPPED CLUBS: 1

24 CLUBS OF 47 ADDED 1 OR MORE NEW MEMBERS

GENDER DISTRIBUTION

MALE 871 (60.36%)  
FEMALE 571 (39.57%)

DROPPED MEMBERS

DECEASED	27
CLUB CANCELLED	0
OTHER	120
<b>TOTAL</b>	<b>147</b>

[CLICK HERE FOR CUMULATIVE MEMBERSHIP DATA](#)

TOTAL FAMILY UNIT MEMBERS	238
FAMILY MEMBERS PAYING HALF DUES	121